

## SEDGWICK PARISH COUNCIL CANAL REPORT

January 2025

It's very soggy and cold out there! There is a record amount of water in the canal basin.

**Trees:** All dormant. JP will carry out maintenance when the basin is accessible.

**Vegetation:** All died back and ok

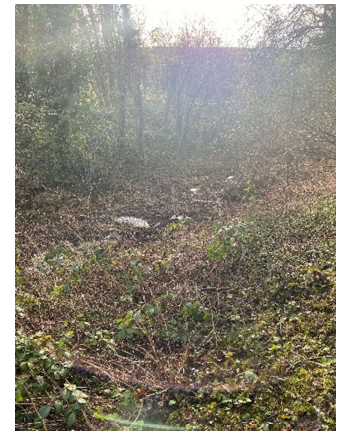


**Benches:** All OK

**Paths:** The aqueduct path is flooded and quite hazardous. There is the usual leaf mould on top of our gravel path and some smaller puddles about half way up the second half.

**Boundaries, Walls and Fences** – The Young Framers cancelled their visit in November and haven't been in touch with a new date – the two smaller repairs are not a hazard.

**Signage:** All are sturdy but the waymarker still needs a re-varnish.



**Usage:** very busy over Christmas and some evidence of tyre marks in the mud.

**PS** the signage at the foot of the aqueduct will need a re-varnish in the Spring – I added and appeal to the Xmas newsletter but there has been no response.

**CRT:** The aqueduct path needs attention.

### Lancaster Towpath Trail Update.

The installation of the path between Crooklands and Holme is progressing – it is a much wider path than at Stainton – four people wide - and black tarmac rather than sandstone – there has been quite significant disturbance of the verges to install it.



February half term activities are being planned along the towpath – bike rides, history talks and a troll trail.

I have received a reply from Helen Moriarty about the funding they have received for the section including the Wildlife area, indicating they acknowledge that landowner consultation and engagement will be required.

*Yes LCRP CIC have received funding to develop a Fundraising Strategy for the section between Kendal and Stainton. The ambition to improve the accessibility for all users (not specifically cyclists) of the Towpath Trail continues and the northern section is currently the least accessible part of the wider trail. The strategy is for internal guidance and is designed to prompt and guide LCRP discussion and inform its future decisions - with full awareness that landowner consultation and engagement will be required. We can keep you posted when those discussions begin, we have a meeting at the end of January where the Fundraising Strategy will be discussed.*

It remains to be seen if we may benefit from any funding if we continue to keep it as a footpath not a cycle path as their policy is as follows "Our long-term aim is to replicate this type of improved surface all the way to Kendal to increase the off road cycling and accessibility opportunities for all."